

Job Description

Job title:	Specialty Doctor in Myalgic Encephalomyelitis / Chronic Fatigue Syndrome (ME/CFS) and Fibromyalgia Service
Division:	Queen Square
Board/corporate function:	Specialist Hospital Board
Salary band:	Specialty Doctor (Temporary) - up to 6 months
Responsible to:	RLHIM Clinical Director
Accountable to:	Divisional Clinical Director for Queen Square
Hours per week:	tba
Location:	Royal London Hospital for Integrated Medicine (RLHIM)

University College London Hospitals NHS Foundation Trust

University College London Hospitals NHS Foundation Trust (UCLH) is one of the most complex NHS trusts in the UK, serving a large and diverse population.

We provide academically-led acute and specialist services, to people from the local area, from throughout the United Kingdom and overseas.

Our vision is to deliver top-quality patient care, excellent education and world-class research. We provide first-class acute and specialist services across eight sites:

1. University College Hospital (incorporating the Elizabeth Garrett Anderson Wing)
2. National Hospital for Neurology and Neurosurgery
3. Royal National Throat, Nose and Ear Hospital
4. Eastman Dental Hospital
5. Royal London Hospital for Integrated Medicine
6. University College Hospital Macmillan Cancer Centre
7. The Hospital for Tropical Diseases
8. University College Hospitals at Westmoreland Street

We are dedicated to the diagnosis and treatment of many complex illnesses. UCLH specialises in women's health and the treatment of cancer, infection, neurological, gastrointestinal and oral disease. It has world class support services including critical care, imaging, nuclear medicine and pathology.

Specialist Hospitals Board

The Specialist Hospitals Board is made up of five divisions: Queen Square (National Hospital for Neurology and Neurosurgery and Royal London Hospital for Integrated Medicine), the Royal National Throat, Nose and Ear Hospital, the Eastman Dental Hospital, Women's Health and Paediatric and Adolescent Services.

Queen Square Division

Queen Square Division comprises of the National Hospital for Neurology and Neurosurgery (NHNN) and Royal London Hospital for Integrated Medicine (RLHIM) and is the largest division within the Specialist Hospitals Board and UCLH.

The National Hospital for Neurology and Neurosurgery (NHNN)

The NHNN is an internationally renowned hospital for clinical practice and world-class clinical research in neurosciences. It is also closely associated with the Institute of Neurology (IoN).

Together, NHNN and IoN are regarded as the premier neurosciences centre in the UK. In addition to Neurology and Neurosurgery, the NHNN provided comprehensive services in Neuro-rehabilitation, Neuro-Critical Care and Neuro-Psychiatry. The NHNN received secondary, tertiary and quaternary referrals from across the UK and internationally.

The Royal London Hospital for Integrated Medicine (RLHIM)

The Royal London Hospital for Integrated Medicine (RLHIM) is a centre for evidence-based practice, education and research specialising in chronic, complex medical conditions. We aim for person-centred, holistic care, considering the whole person and their environment in the quest for optimal health and wellbeing. To achieve this, we provide a combination of lifestyle strategies, medical, physical and psychological treatment, and advice on safe, appropriate use of complementary therapies. We also provide and encourage self-care approaches which can continue to be used by patients after discharge. The RLHIM operates on an outpatient-only basis and all services are staffed by experienced, registered healthcare professionals.

Working closely with other hospitals at UCLH, we provide the following clinical services: Acupuncture for Chronic Pain and Headache, Adult Allergy, Integrated Children's and Adolescent service, ME/CFS and Fibromyalgia, Integrated General medicine, Insomnia and Behavioural Sleep Medicine, Integrated Cancer Care, Irritable Bowel Syndrome, Musculoskeletal and Manual Medicine, Nutrition and Dietetics, Podiatry, Psychological Therapies (Autogenic Training, Hypnosis for Irritable Bowel Syndrome, Cognitive Behavioural Therapy, Mindfulness), Integrated Women's service.

The hospital provides an integrated Pharmacy service including a retail pharmacy where patients and public can obtain advice from specialist pharmacists. Other services include a specialist Complementary and Alternative Medicine library and information service open to the public; an Education department which runs courses on integrated medicine for healthcare professionals; and a Research department specialising in self-care and integrated medicine approaches to health.

Job Purpose

The post-holder will be accountable to Dr Chris Turner Divisional Clinical Director of Queen Square and responsible to Dr Saul Berkovitz, Clinical Director, RLHIM. The job plan comprises 80% direct clinical care (outpatient clinics, which will be a mixture of face-to-face and remote (telephone / video), patient administration (1h per 3.5h of clinic slots), multidisciplinary meetings) and 20% supporting professional activities (continuing professional development, statutory and mandatory training and other clinical governance activities).

Physician

To provide clinical therapeutic services to RLHIM, seeing complex, chronically ill, usually multi-morbid patients with ME/CFS Fibromyalgia and associated conditions such as irritable bowel syndrome, anxiety and depression. Patients will usually have been fully investigated before being referred to RLHIM. If diagnosis is in doubt, further investigations may be requested via the GP, referring specialist, or other departments at UCLH. The team consists of a consultant physician, two specialty doctors, a liaison psychiatrist, and a senior occupational therapist, physiotherapist, CBT therapist and dietician providing multidisciplinary condition management programmes based on NICE and international guidelines. There are strong links with other UCLH services including Pain, Rheumatology, Neuropsychology, Gastroenterology, Infectious Diseases, Autonomics, and Adolescent ME/CFS.

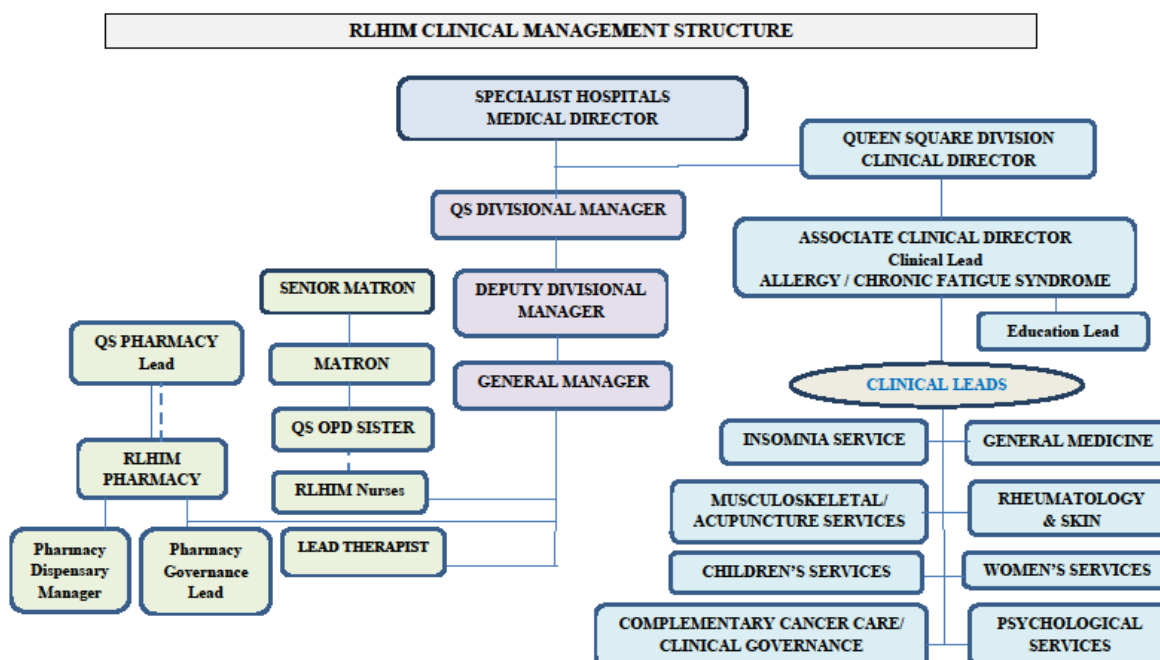
Main Duties and Responsibilities

- Service provision: outpatient clinics providing safe and appropriate care for patients. Tailoring a programme of care for the individual to support emotional and physical wellbeing. Liaison with members of their specialist teams at RLHIM, UCLH and other hospitals. Responding to patient queries in a timely fashion.
- 2h 15 mins job planned time for multidisciplinary team meetings per month
- Keeping up to date appropriately with CME and statutory/mandatory training
- Prompt and effective communication by clinical letters to GPs and referrers
- Prompt response to colleagues by e-mail

Key Working Relationships

The post holder/s will work closely with RLHIM Clinical Director, the General Manager, pharmacy staff, clinical leads and administrative staff at the RLHIM.

Close liaison with RLHIM clinical staff. UCLH is committed to developing robust mechanisms to ensure the delivery of the best possible standards of clinical governance, in which the post-holder/s will be expected to play a full part.



Key Results Areas

To adhere to the UCLH Service Commitment "Putting Patients First" and adopt a professional approach to customer care at all times.

To comply with the Trust's Equal Opportunities Policy and treat staff, patients, colleagues and potential employees with dignity and respect at all times.

To take personal responsibility for promoting a safe environment and safe patient care by identifying areas of risk and following the Incident, Serious Incidents and Near Misses reporting policy and procedure.

To take personal responsibility for ensuring that UCLH resources are used efficiently and with minimum wastage and to comply with the Trust's Standing Financial Instructions (SFIs).

To comply with Trust policies for personal and patient safety and for prevention of healthcare-associated infection (HCAI); this includes a requirement for rigorous and consistent compliance with Trust policies for hand hygiene, use of personal protective equipment and safe disposal of sharps.

In accordance with the Trust's responsibilities under the Civil Contingencies Act 2004 to undertake work and alternative duties as reasonably directed at variable locations in the event of and for the duration of a significant internal incident, major incident or pandemic.

To be aware of and adhere to all Trust policies and procedures, the Health and Safety at Work Act and the Data Protection Act.

To maintain confidentiality at all times.

Other

The job description is not intended to be exhaustive and it is likely that duties may be altered from time to time in the light of changing circumstances and after consultation with the post holder.

You will be expected to actively participate in annual appraisals and set objectives in conjunction with your manager. Performance will be monitored against set objectives.

Our Vision and Values

The Trust is committed to delivering top quality patient care, excellent education and world-class research.

We deliver our vision through [values](#) to describe how we serve patients, their families and how we are with colleagues in the Trust and beyond.

We put your **safety** and wellbeing above everything

Deliver the best outcomes	Keep people safe	Reassuringly professional	Take personal responsibility
---------------------------	------------------	---------------------------	------------------------------

We offer you the **kindness** we would want for a loved one

Respect individuals	Friendly and courteous	Attentive and helpful	Protect your dignity
---------------------	------------------------	-----------------------	----------------------

We achieve through **teamwork**

Listen and hear	Explain and involve	Work in partnership	Respect everyone's time
-----------------	---------------------	---------------------	-------------------------

We strive to keep **improving**

Courage to give and receive feedback	Efficient and simplified	Develop through learning	Innovate and research
--------------------------------------	--------------------------	--------------------------	-----------------------

Person Specification

Post: Chronic Fatigue Syndrome and Fibromyalgia Service Specialty Doctor (5 sessions)

Dept/Ward Royal London Hospital for Integrated Medicine

REQUIREMENTS	HOW WILL CRITERIA BE ASSESSED? APPLICATION / TEST / INTERVIEW / REFERENCES				
	ESSENTIAL / DESIRABLE*	A	T	I	R
<u>Knowledge & Qualifications</u>					
MBBS or equivalent	E	X			
MRCP or MRCGP	D				
Full registration with the GMC	E	X			
<u>Experience</u>					
Experience in working with patients with complex, chronic medical conditions	E	X		X	
Experience of working within multidisciplinary health team	E	X		X	X
<u>Skills & Abilities</u>					
Excellent interpersonal and patient communication skills	E			X	X
Patient-centred approach	E			X	X
Good organisational skills	D	X		X	X

<p>- Information processing (IT skills)</p> <p>Computer literacy, including use of e-mail, Internet and voice dictation systems</p>	E	X		X	
<p><u>Personal Qualities</u></p> <p>Integrity</p>	E			X	X
<p><u>Other requirements, including:</u></p> <p>Physical skills (e.g. requirement for speed and accuracy, hand-eye co-ordination)</p>	D	X		X	X