

Focus on Symptoms

ME Awareness Week

11th - 17th May 2020



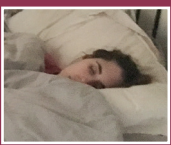
Post Exertional
Malaise



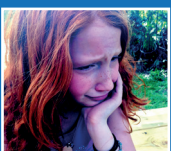
Flu-like
Symptoms



Muscle Fatigue,
Joint and Nerve Pain



Sleep Problems, Vivid
Dreams, Night Sweats



Cognitive
Dysfunction



Light & Sound Issues



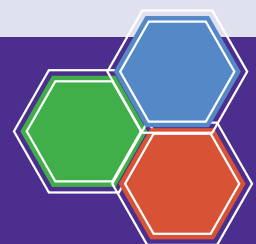
Dizziness, Fainting



Gastrointestinal Issues



Get involved.
Help our campaign.
meassociation.org.uk



#MESymptoms